



2023 Hayward Air Rally Checkpoint Photos and Answers

Checkpoint 1 – Antioch



3648

Checkpoint 1

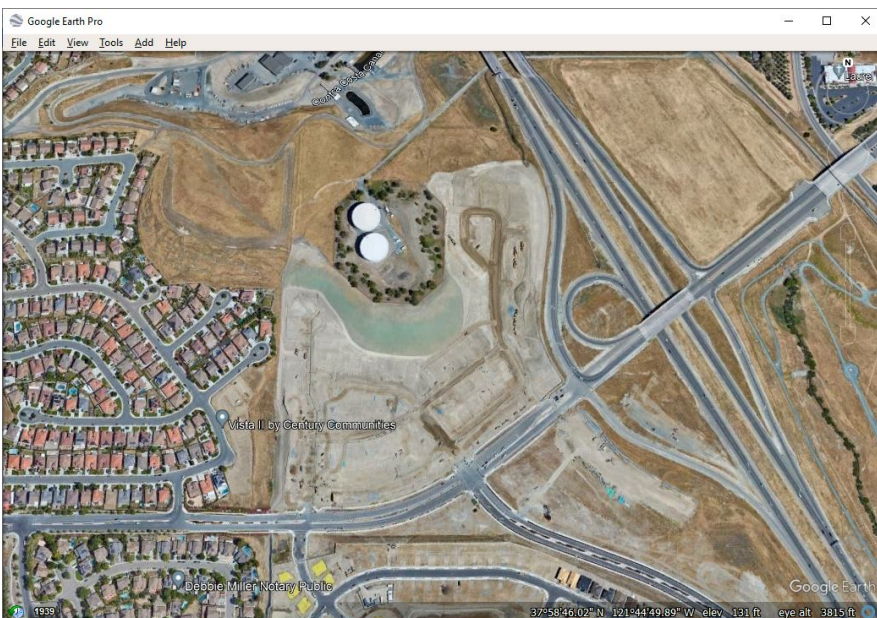
Antioch

Elevation 131'
Overfly Above 2500'

Lat N 37° 58.77'
Long W 121° 44.83'

There are two white tanks next to the freeway here. Between the tanks and the freeway off-ramp to the east, there is:

- A. A graded dirt lot for a housing development
- B. Some paved streets with mostly empty housing lots**
- C. A nearly completed housing tract



Google Earth shows the area in an earlier stage of development, and matches answer A.

oints

Checkpoint 2 – Calaveras High School Football Field



Checkpoint 2

Elevation 949'
Overfly Above 3500'

Football Field

Lat N 38° 11.95'
Long W 120° 41.11'

(No GPS coords provided.) Fly to the intersection of the LIN 046 radial and the HNW 157 radial. The football field here has:

- D.** A white track
- E.** No lettering in the end zones
- F.** Been painted a bright blue color

Google doesn't match any of the answers. Toyon (answer E) is a decoy at LIN 041 HNW 163, 3.6nm away.



Checkpoint 3 – Chicken Ranch Casino



1022

Checkpoint 3

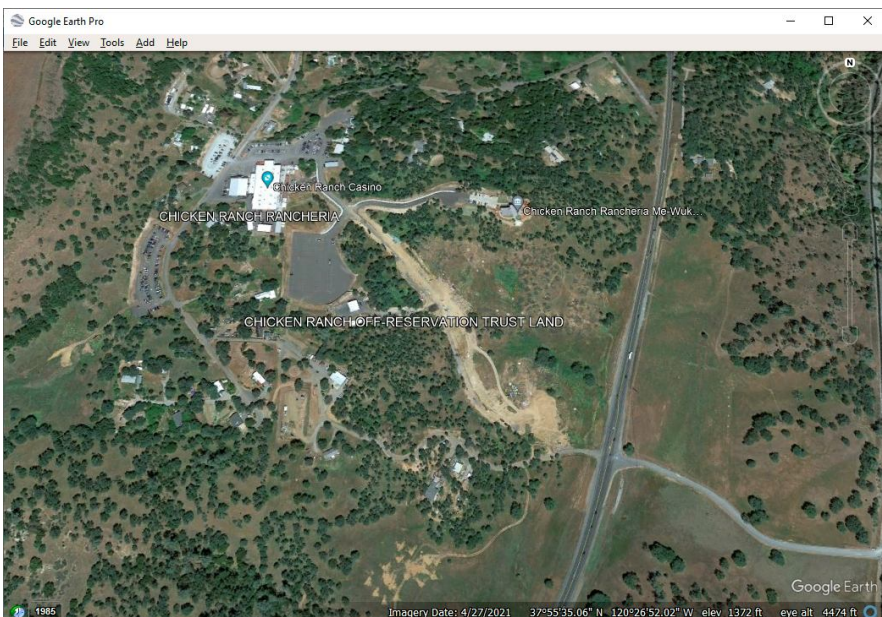
Elevation 1372'
Overfly Above 3500'

Chicken Ranch Casino

Lat N 37° 55.58'
Long W 120° 26.87'

Near the white roofed casino building there is:

- G.** A larger/taller building under construction
- H.** A highway overpass under construction
- J.** A large dirt area being graded



Google Earth shows the area in an earlier stage of development (answer J).

The intersection has also been redeveloped, and now has a traffic circle.

nts

Checkpoint 4 – Oakdale (O27)

Optional Bonus



0486

Checkpoint 4
Optional Bonus

Oakdale (O27)

Elevation 237' (Pattern Altitude 1237')
Overfly Above 2500'

Lat N 37° 45.38'
Long W 120° 48.01'

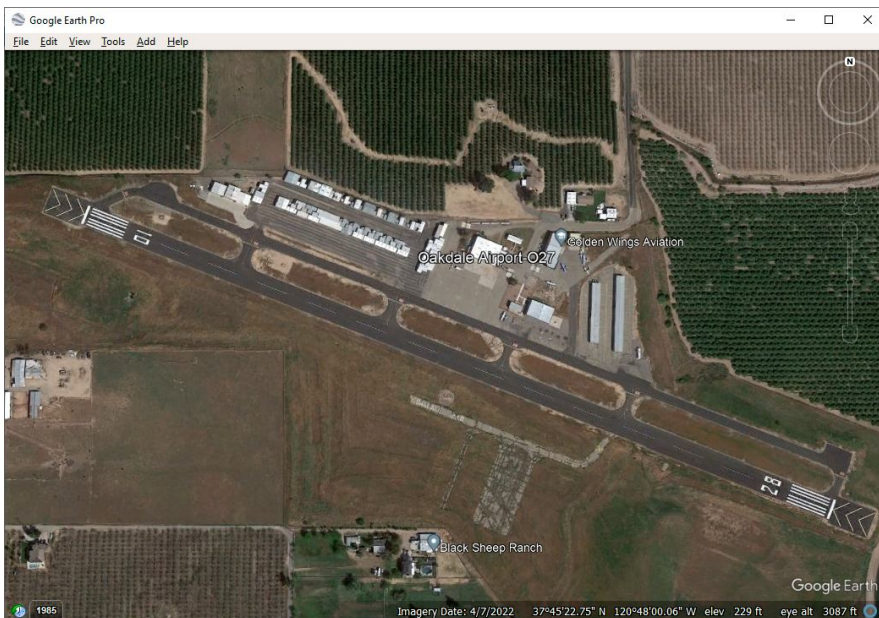
This airport has a FRESH NEW

N. Compass rose painted on the Rwy 28 runup area

P. Painted name "OAKDALE 122.8"

R. Painted green divider between the taxiway and the east end of the ramp

S. Resurfaced ramp on south side of field



Google doesn't show any of the choices freshly painted.

oints

Checkpoint 5 – Flying M (CA03)



2524

Checkpoint 5

Flying M (CA03)

Elevation 280'
Overfly Above 2500'

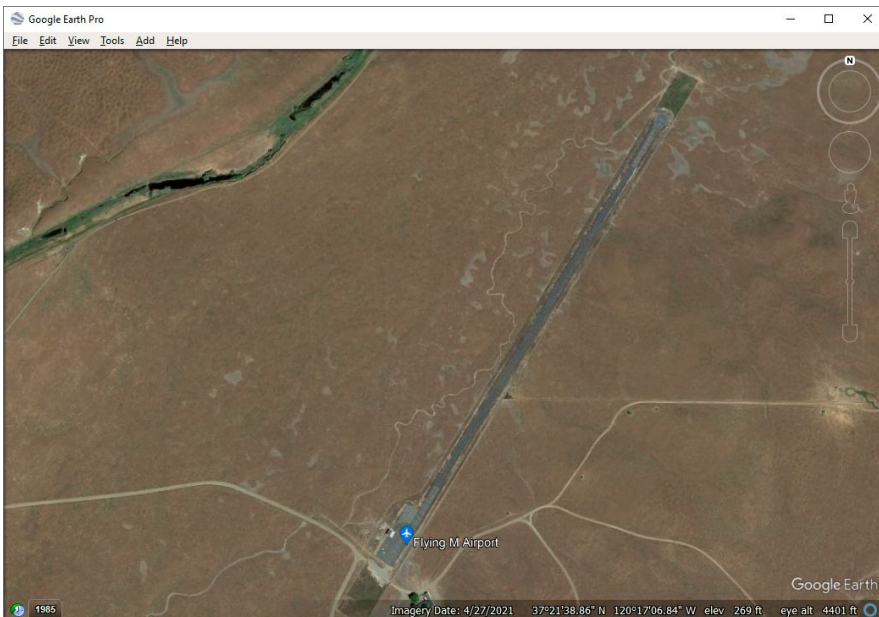
Lat N 37° 21.65'
Long W 120° 17.11'

At the NORTH end of the runway:

T. There is a runup/turn around area at the very end of the runway.

U. There are runup areas on both sides of the runway, offset a short distance from the end of the runway

V. There is no runup area.



Google shows what looks like turf where the runway extensions are now, and might suggest answer T.

ts

Checkpoint 6 – Multiple Obstruction



3721

Checkpoint 6

Elevation 96'
Overfly Above 2500'

Obstruction

Lat N 37° 05.85'
Long W 120° 49.99'

(No GPS coords provided.) About 3nm NE of KLSN there is a charted multiple obstruction labeled "301 (203)". At this location I found:

- X. One antenna
- Y. Two antennas
- Z. Three antennas